



## The Office of Global Outreach at Wheeling Jesuit University

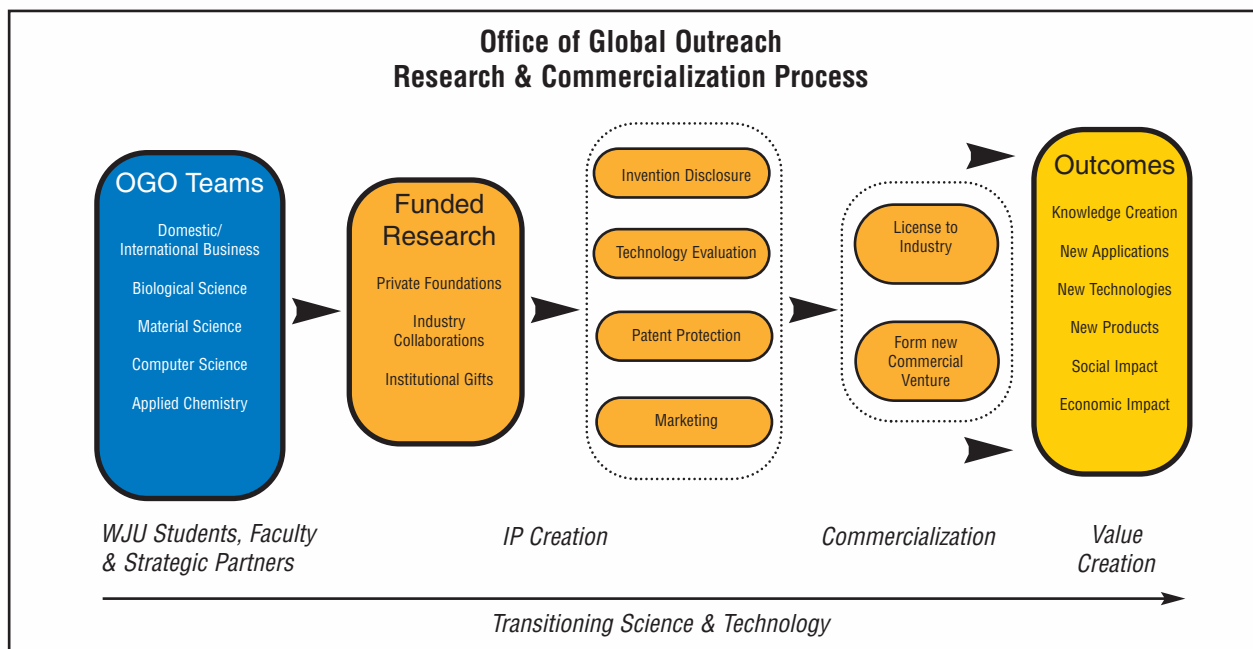
### Our Role

The Office of Global Outreach (OGO) supports Wheeling Jesuit's faculty and students to develop concepts, technologies, products and start-up businesses. OGO accomplishes this by identifying university innovators and entrepreneurs and transitioning creative ideas into real-world solutions. OGO provides a variety of services such as:

- Driving and mentoring the development of new science and technology
- Transitioning innovation to intellectual property (copyrights, patents, etc.) to commercial markets
- Promotion and advocacy of new WJU technologies and science
- Developing funded research collaborations with industry
- Supporting and promoting entrepreneurship



Wheeling Jesuit University's Office of Global Outreach meeting with Deusto University, and GAIA in Bilbao, Spain 2009.



**WHEELING JESUIT UNIVERSITY**



## Core Competencies

OGO staff possesses considerable experience working with domestic and international business, industry and government. By combining this with WJU faculty's expertise in the areas of Biological Sciences, Applied Chemistry, Material Science, Computer Science, Functional Mathematics, and Physics the OGO assembles flexible, high performing project teams to address and advance research and commercial opportunities

## Global Approach

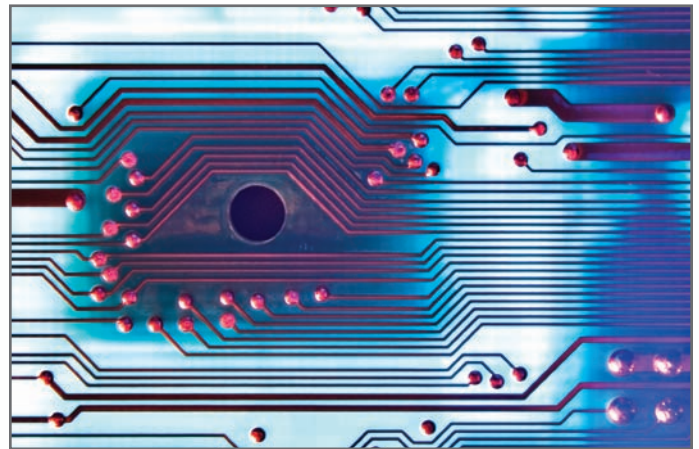
OGO focuses on the discovery of new science, the development of new technologies and the creation of commercial products and enterprises that solve some of the major challenges facing today's global society, such as:

- Efficient and renewable energy technologies
- Waste management solutions
- Healthcare/wellness technologies
- Educational and Information Technologies
- Transportation, trade and global security

## Local and Global Partnerships

OGO believes relationships are fundamental to success in an increasingly global market place and we are committed to developing international partnerships that:

- Enhance awareness of global technological needs
- Promote sharing of new technologies and innovations
- Lay the foundation for collaboration between organizations from different countries to conduct research
- Increase opportunities to expedite the dissemination of research and technology for public good



## For more information contact:

**Ryan Wall, OGO Director**

Tel: 304-243-2633.

Cell: 304-281-4783.

[rwall@wju.edu](mailto:rwall@wju.edu)

[www.wju.edu/ogo](http://www.wju.edu/ogo)



**WHEELING JESUIT UNIVERSITY**